



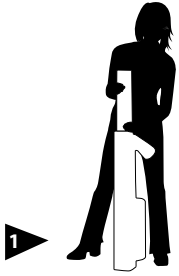


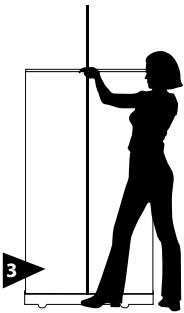
- A  A - Base
- B  B - Tri-Fold Pole
- C  C - Top profile
- D  D - Locking Pin



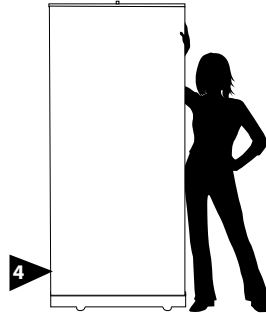
Carefully remove the unit from the nylon bag and turn stabilizing feet to a 90° angle.



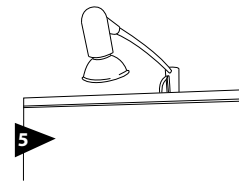
Assemble pole and insert into hole located on the base.



Pull graphic out of the base and fasten hook into the top of pole.

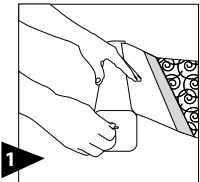


Place display into position. To close, unfasten top hook and firmly grip while slowly and gently retracting graphic.

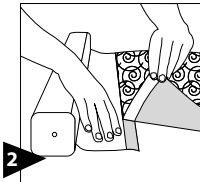


**Optional**  
Insert light into top of pole.

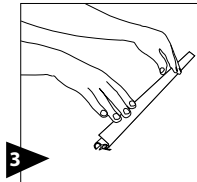
## How to attach or replace graphics.



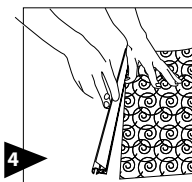
1 Pull graphic out until the leader is exposed. Insert locking pin to disable the roller.\*



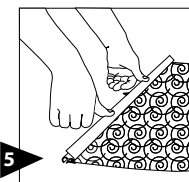
2 Remove graphic and replace.



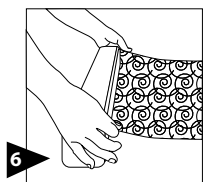
3 Pull open the snap lock profile.



4 Once the snap-lock Profile is open insert top portion of graphic into profile.\*



5 Apply even pressure to the snap-lock profile to lock graphic into place. Replace end caps.



6 Grip image and unit securely and remove locking pin. Slowly guide image back into unit.

**\*CAUTION:** Do not remove the locking pin until the profile is attached to the graphic and the graphic is attached to the leader.