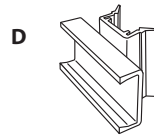
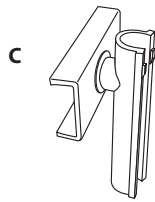
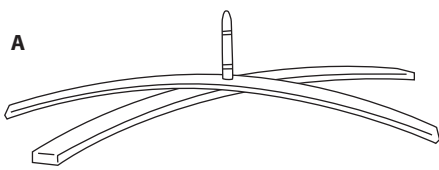


MOSS IMPRESSION

INSTRUCTIONS

11/03/2010



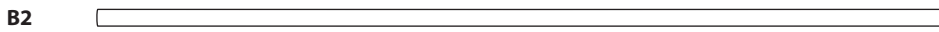
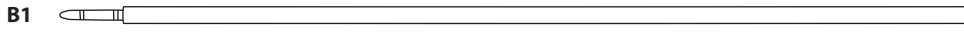
A - Base

B - 2 Piece Pole

C - Front Graphic Bar Clip

D - Back Graphic Bar Clip

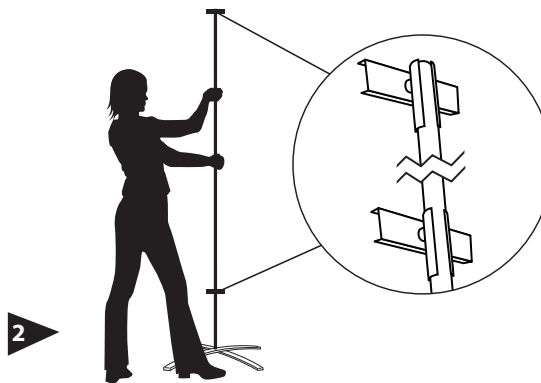
E - Graphic Bars



1

Attach the bottom pole (B1) to the base (A) by sliding the opening over the post and giving it a firm, determined push to seat it flush with the base.

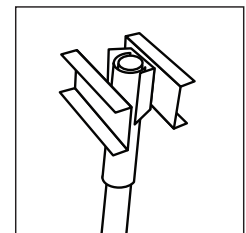
Connect the top pole (B2) to the bottom pole by sliding the open end onto the top post of the bottom pole until seated firmly.



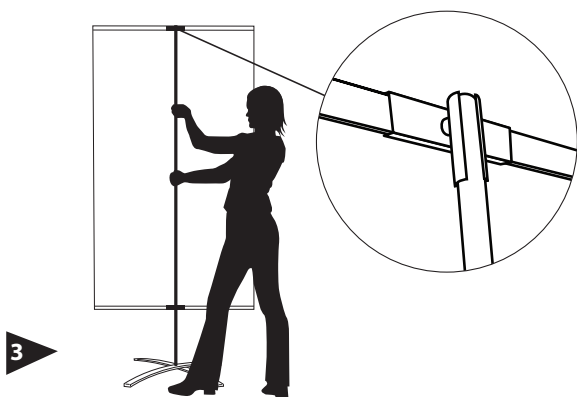
2

Attach the front graphic bar clip (C) to the top of the pole so that the "lip" is on top and catches the top of the pole. Attach the second front graphic bar clip (C) to the bottom of the pole. The bottom front graphic bar clip (C) does not need to be in the exact position as it can easily be adjusted by sliding it up or down the pole.

NOTE: If the stand is being used double sided, snap the back graphic bar clip (D) to the front graphic bar clip (C).



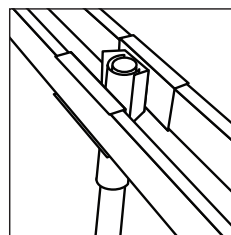
Double Sided Option



3

Snap the top graphic bar (E) into the top front graphic bar clip (C) first and then snap the bottom graphic bar (E) into the bottom front graphic bar clip (C) second.

NOTE: If the stand is to be double sided, repeat the above step for the other side.



Double Sided Option



4

Adjust the bottom graphic clip to the desired graphic tension.

Enjoy!