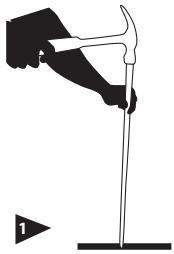


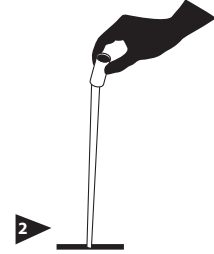
EZ Flag

SPECIFICATIONS & INSTRUCTIONS

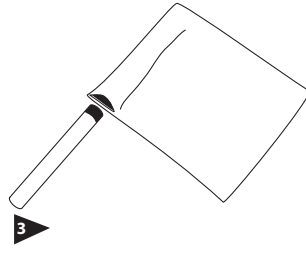
GROUND STAKE INSTRUCTIONS



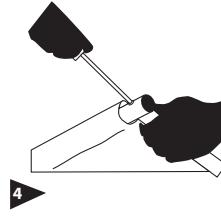
1
Pound ground stake at least 12" into the ground.



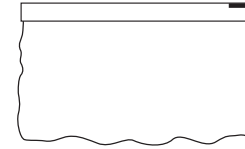
2
Slide the EZ Glide collar over top the ground stake.



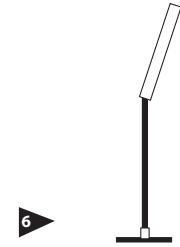
3
Assemble the side pole and insert it into the sleeve on the left of the graphic, then slide the top pole into the sleeve on the top of the graphic.



4
Screw the two poles together.

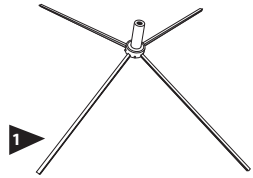


5
Locate the velcro tab at the end of the sleeve. Remove the protective backing and apply the adhesive layer directly to the pole. (Note: When disassembling flag, simply unzip velcro pieces from each other.)

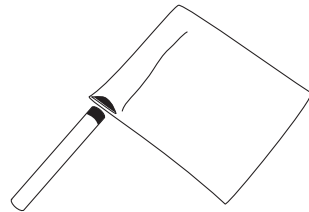


6
Place the EZ Flag over the ground stake.

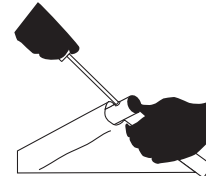
HARD SURFACE STAND INSTRUCTIONS



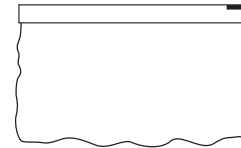
1
Place the hard surface stand in the desired location



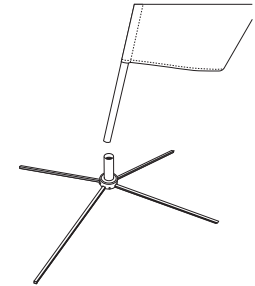
2
Assemble the side pole and insert it into the sleeve on the left of the graphic, then slide the top pole into the sleeve on the top of the graphic.



3
Screw the two poles together.

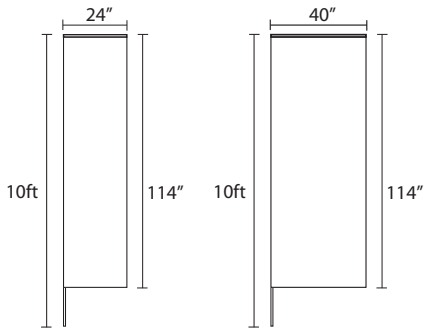


4
Locate the velcro tab at the end of the sleeve. Remove the protective backing and apply the adhesive layer directly to the pole. (Note: When disassembling flag, simply unzip velcro pieces from each other.)



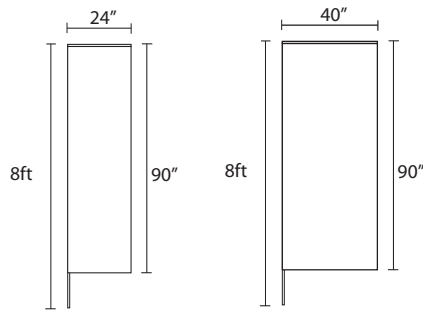
5
Place the EZ Flag over the post on the hard surface stand.

SPECIFICATIONS



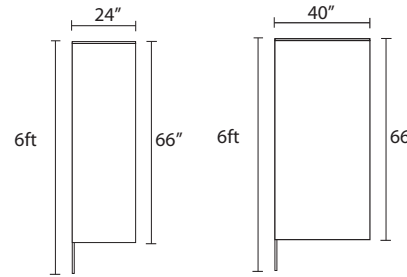
Viewable area
23"W x 111.5"H

Viewable area
40"W x 114"H



Viewable area
24"W x 90"H

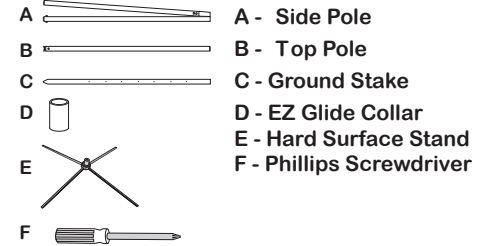
Viewable area
40"W x 90"H



Viewable area
24"W x 66"H

Viewable area
40"W x 66"H

PARTS:



NOTES:

- Refer to the graphic templates for art layout sizes.
- Custom Sizes are available.
- Critical art and text should not be within 2" of the sides and 1.5" of the top and bottom of the viewable area.
- See "Preparing Digital Files" for specific details on submitting art.