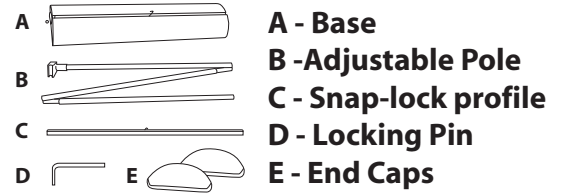


MOSS CLASSIC 3.5

INSTRUCTIONS

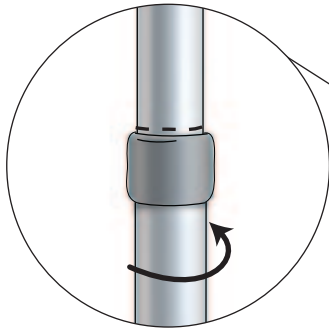
8/19/2010



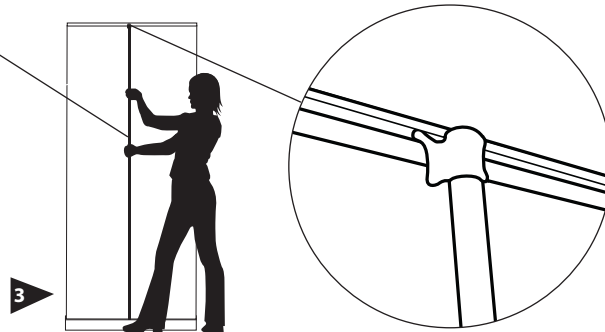
1 Carefully remove the unit from the nylon bag.



2 Assemble pole and insert into hole located on the base.



For 79" size graphic, extend pole until dotted line is showing and then twist the bottom pole section to lock it into position. For other sizes, adjust pole until the correct amount of graphic is showing and then twist the bottom pole section to lock it into position.

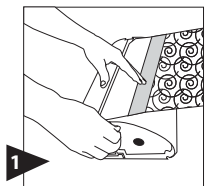


3 Pull graphic out of the base and attach profile to the top of the pole.

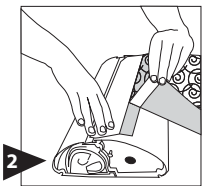


4 Place display into position. To close, unfasten top clip and firmly grip while slowly and gently retracting graphic.

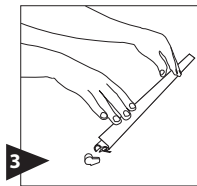
How to attach or replace graphics.



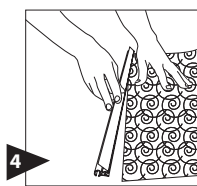
1 Pull graphic out until the leader is exposed. Insert locking pin to disable the roller.*



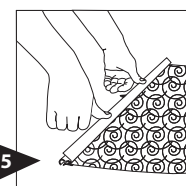
2 Remove graphic and replace.



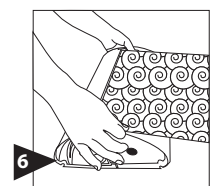
3 Remove end caps and pull open the snap lock profile.



4 Once the snap-lock Profile is open insert top portion of graphic into profile.*



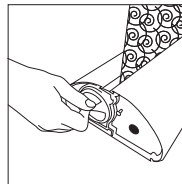
5 Apply even pressure to the snap-lock profile to lock graphic into place. Replace end caps.



6 Grip image and unit securely and remove locking pin. Slowly guide image back into unit.

Re-tension instructions.

1. With front of the unit facing you, remove the end caps from each side.
2. Remove the locking pin from the left side end cap and insert it into the small hole on the side of the base. This prevents the roller from turning so tension can be created.
3. Turn the tension knob on the right side 30 complete clockwise turns.
4. Grip image and unit securely and remove locking pin. Slowly guide graphic back into unit. If graphic does not completely retract, reinsert the lock pin and turn the tension knob 4 to 8 more complete turns.
5. Put the locking pin back into its holder and put on end caps



***CAUTION:** Do not remove the locking pin until the profile is attached to the graphic and the graphic is attached to the leader.