
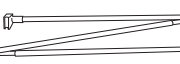





MOSS CLASSIC 1 & 2

INSTRUCTIONS

8/19/2010

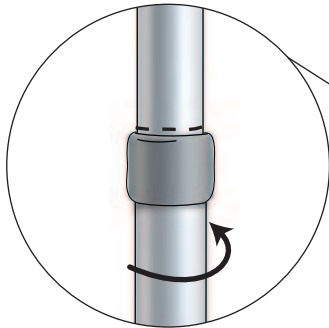
- A  A - Base
- B  B - Adjustable Pole
- C  C - Snap-lock profile
- D  D - Locking Pin
- E  E - Re-Tension tool



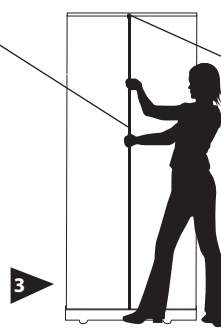
1 Carefully remove the unit from the nylon bag and turn stabilizing feet to a 90° angle.



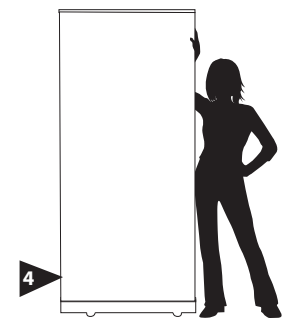
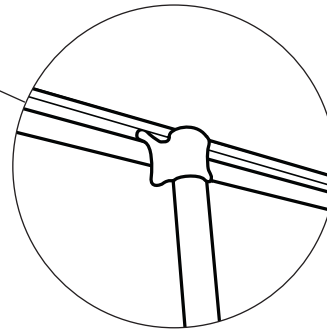
2 Assemble pole and insert into hole located on the base.



For 79" size graphic, extend pole until dotted line is showing and then twist the bottom pole section to lock it into position. For other sizes, adjust pole until the correct amount of graphic is showing and then twist the bottom pole section to lock it into position.

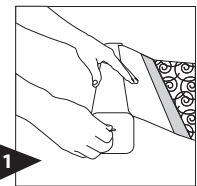


3 Pull graphic out of the base and attach profile to the top of the pole.

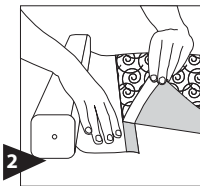


4 Place display into position. To close, unfasten top clip and firmly grip while slowly and gently retracting graphic.

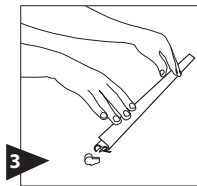
How to attach or replace graphics.



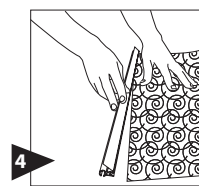
1 Pull graphic out until the leader is exposed. Insert locking pin to disable the roller.*



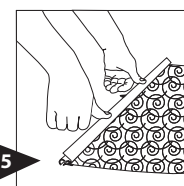
2 Remove graphic and replace.



3 Remove end caps and pull open the snap lock profile.



4 Once the snap-lock Profile is open insert top portion of graphic into profile.*

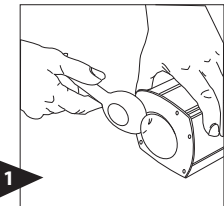


5 Apply even pressure to the snap-lock profile to lock graphic into place. Replace end caps.

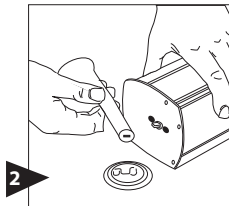


6 Grip image and unit securely and remove locking pin. Slowly guide image back into unit.

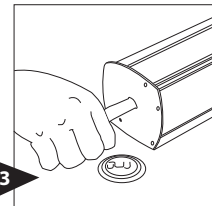
Re-tension instructions.



1 Face back of unit with the pole slot closest to you. Use the edge of the re-tension tool to gently pop of the plastic cover from the right side of the unit.



2 **HOLDING UNIT FIRMLY!** Guide the slot of the re-tension tool over the exposed flat metal pin. Slide the pin from the lock position into the center circle. The pin can now be turned for re-tensioning.



3 **HOLDING UNIT FIRMLY!** Rotate the re-tension tool clockwise 33 full turns. Slide the flat pin back into the lock position and replace the plastic cover.

***CAUTION:** Do not remove the locking pin until the profile is attached to the graphic and the graphic is attached to the leader.